



Plate Lifter Range

Model PL-1 – PL-3

Intended Use:

Quick and easy handling and lifting.

Features:

- Magnetic “claws” with release handle for lifting and dragging plates
- Ideal for any flat work pieces
- Strong robust design



Model	PL-1	PL-2	PL-3
L x W x H (mm)	140 x 116 x 33	160 x 150 x 27	180 x 160 x 34
Lift / Drag Cap (kg)	180/100*	120/75*	350/180*
Weight (kg)	2.1	1.4 (plastic body)	3.6

Lifting Capabilities PL-1:

Load Thickness	Attraction Force Air gap 0mm	Attraction Force Air gap 0.2mm	Sliding Force Air gap 0mm	Sliding Force Air gap 0.2mm
>10mm	225 kg	87 kg	187 kg	76 kg
10mm	160 kg	110 kg	120 kg	60 kg
5mm	140 kg	100 kg	110 kg	48 kg
1mm	35 kg	22 kg	25 kg	18 kg

Lifting Capabilities PL-2:

Load Thickness	Attraction Force Air gap 0mm	Attraction Force Air gap 0.2mm	Sliding Force Air gap 0mm	Sliding Force Air gap 0.2mm
>10mm	120 kg	60 kg	75 kg	50 kg
10mm	110 kg	50 kg	65 kg	40 kg
5mm	75 kg	35 kg	60 kg	35 kg
1mm	30 kg	20 kg	20 kg	15 kg

Lifting Capabilities PL-3:

Load Thickness	Attraction Force Air gap 0mm	Attraction Force Air gap 0.2mm	Sliding Force Air gap 0mm	Sliding Force Air gap 0.2mm
>10mm	300 kg	167 kg	206 kg	155 kg
10mm	289 kg	140 kg	190 kg	134 kg
5mm	211 kg	105 kg	187 kg	120 kg
1mm	44 kg	40 kg	47 kg	34 kg



Model PL-5

Intended Use:

"Handy" Magnet with release handle to pick up small components or destacking plates.

Features:

- Robust solid design
- One handed use



Model	PL- 5
L x W x H (mm)	92 x 50 x 35
Lift / Drag Cap (kg)	50*
Weight (kg)	0.65



Model PL-6

Intended Use:

Attach and release with one hand! The PL-6 plate Lifter is a unique lifting aid to make the handling of sheet material so easy. It can be used on any type of material to make the transportation of sheets easier and safer.

Features:

- The clamping system self-adjusts to the width of the material and securely holds it in place
- All parts of the PL-6 that touch the load are covered with a special coating so that even the most sensitive materials will not be scratched.
- The ergonomically designed safety grip provides a secure hold and even during turns and swivels the user can easily hold on to.
- Lifts up to 100 kg (220 Lbs.) per Grip
- Span width 0 - 80 mm
- Sturdy aluminium construction
- Absolutely Non-Slip in all span widths
- Supplied in pairs



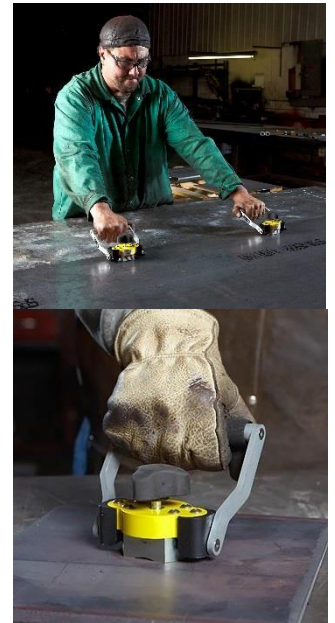


Manual Hand Lifter 60M

Intended Use: Ideal for small steel handling, dragging sheet, picking, placing and pulling parts out of burn table or handling scrap.

Features

- On/Off Magswitch Magnet control – Stays clean
- Super strong Magnet up to 200 lbs (91 kg) of grip
- Nearly 3 times the recommended safe working load limit of 60 lb. (27kg)
- Simple 180 degree turn of a knob to turn the magnet on or off.
- Pipe groove for transporting various size pipe.
- Pivot handle with multi settings (for sheet dragging) or locking handle vertical for use as a (hand Lifter)
- Safely pick up hot, sharp or dirty steel without touching it.
- Easy On/Off magnet for fast efficient steel transport
- Strong magnet allows transport of heavier material.
- Fast pick up and transport of small steel loads.
- No need to manhandle steel or fight magnets in moving steel.
- Super strong Magnet gives you added security in handling heavy steel.
- No more picking up sharp or hot steel with your hands.



Electric Hand Lifter 60-CE

Intended Use: The world's first Cordless Electric (CE) Hand Lifter! The Hand Lifter 60-CE is a must for every metal fab shop. Ideal for pulling parts out of cutting table, picking up steel to place on a work table, in a fixture or handling scrap parts.

The Magswitch Hand Lifter 60-CE is our one-handed magnetic lifter delivers more control with the use of only one hand. Turn on and off at the push of a button to lift and release steel. We built a fail-safe into our technology so if the power runs out while working and the unit is under load, the magnet stays on and the steel won't fall off! Comes with two rechargeable 4V lithium-ion batteries, charger, and holster.

Features

- Push button On/Off Control.
- 100% duty cycle-Magnet can stay ON forever!
- Magswitch magnet stays clean when off!
- Indicators: "On" indicator light; Battery strength indicator
- Cordless Electric rechargeable 4 volt battery with Charger (includes 2 batteries)
- Recharges in just 20 minutes.
- Super strong Magnet Up to 90 kg of grip More than 3 times the recommended safe working load of 27 kg
- Pipe groove for transporting pipe.
- High Duty Cycle Magnet for years of daily use
- Fast pick up and transport of small steel loads
- No more picking up sharp, hot or greasy steel with your hand
- Hand lifter weight 1.8kg





Fixed Hand Lifter 235 & 400

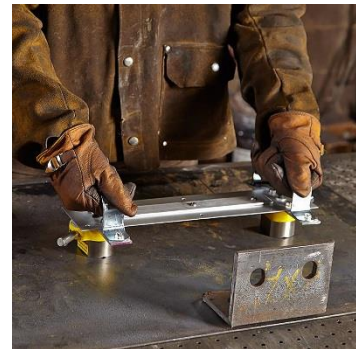
The Magswitch Fixed Hand Lifter 235 and 400 are an easy, one-handed operation to safely pick up and transport hot, sharp, or dirty steel without touching it. Our fixed hand lifters feature a locking mechanism that prevents accidental release.

The 235 option - Easily lifts a small steel sheet with 235 pounds of magnetic holding force.

The 400 option - Easily lifts a small steel sheet with 390 pounds of magnetic holding force.

Features

- Perfect for handling sharp or dirty steel or scrap.
- Can be used for dragging or handling small steel sheet.
- Does not use an electrical power source.
- Holds flat and round surfaces of steel.
- Lightweight and easy to use.
- Shallow field magnets allow for de-stacking of thin materials.
- Ideal for small parts from the cutting table.
- Magnet turns completely On and Off.
- Magnet stays clean.



Dual Hand Lifter 235 & 400

With the Magswitch Dual Hand Lifter 235 & 400, safely pick up hot, sharp or dirty steel with our strong magnets. An ergonomic fixed handle and a lever locking mechanism prevent accidental release.

The dual 235 option - Easily handles or drags a small steel sheet with 470 pounds of magnetic holding force.

The dual 400 option - Easily handles or drags a small steel sheet with 780 pounds of magnetic holding force.

Features

- Perfect for handling sharp or dirty steel or scrap.
- Can be used for dragging or handling small steel sheet.
- Does not use an electrical power source.
- Holds flat and round surfaces of steel.
- Lightweight and easy to use.
- Shallow field magnets allow for de-stacking of thin material.
- Adjustable range length allows for versatile use

Extendable Switchable Permanent Hand Magnet

Features:

- Hands off steel: Classic No-Touch tool.
- Eliminates the need to touch sharp, dirty or hot materials to 80°C.
- Pulls parts off the profile cutting table while standing on the side instead of jumping on top.
- Excellent for dragging and guiding heavy sheets.
- Fail-Safe Technology featuring patented magnets.
- Eliminates need for bending over and back injuries.
- Extendable handle for varying distances.
- Multiple working surfaces meant for flat and round material.
- Increases productivity and safety in workplaces and production floors.





Specifications:

Nominal Maximum Breakaway Force:	173 kg
Nominal Maximum Shear:	35 kg
Suggested Lifting Capacity:	23 kg
Full Saturation Thickness:	9.5 mm
Overall Height:	1283 mm
Adjustable heights:	1583; 1883 & 2183 mm
Overall Magnet Length:	71 mm
Overall Width (with handle grip):	160.5 mm
Overall Width (without handle grip):	43 mm
Net Weight:	3.2 kg



*All information is subject to thickness of plate and surface conditions (air gap)